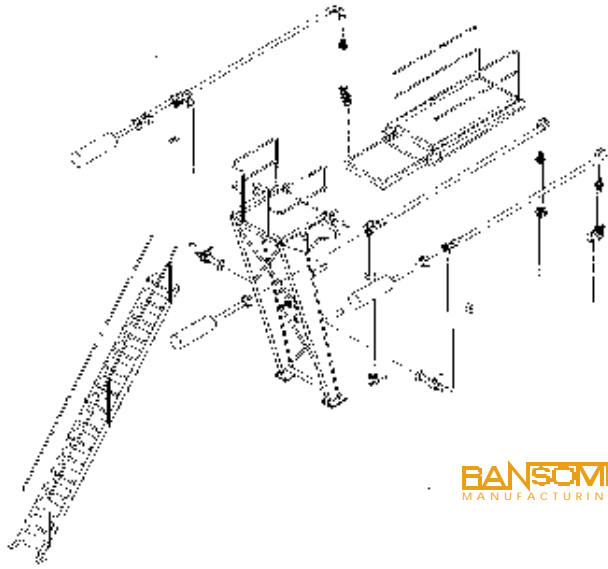


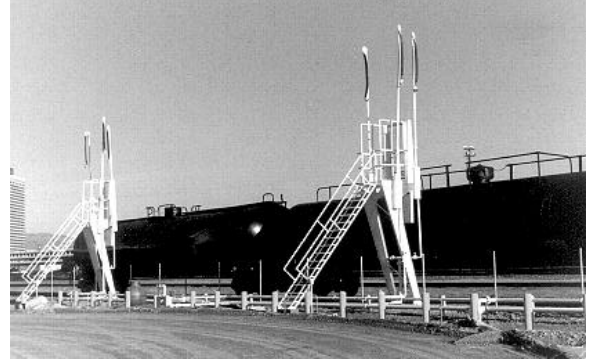
**RAIL TOWER, LOADING ARMS, SWIVEL JOINTS and BULK HEADS**

**Rail Tank Car Unloading Towers**



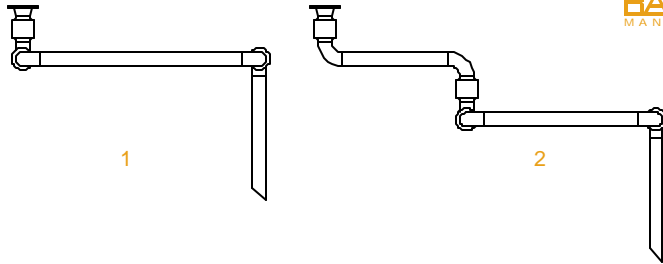
**BANSOME**  
MANUFACTURING

Rail Towers provides safe convenient accessibility to rail tank connections. Its construction is clean and rigid, supported by a two point base. The platform and pipelines are counterbalanced for easier tank connections. All steps and decking are made of skid-proof expanded metal to assure safe footing in all types of weather. Both reentry and side entry ladders are available. Shipped in three sections, the tower is prefabricated, complete with all necessary piping.



DESCRIPTION	PART NUMBER	LIST PRICES
Rail Car Unloading Tower	<b>RCUP</b>	32300.00

**Loading Arms - Tank Car and Tank Truck**



**BANSOME**  
MANUFACTURING

Meeder Equipment Company and Ransome Manufacturing offer a complete size range of loading arms, components and accessories to meet fluid transfer needs. Typical loading configurations include open or closed dome top loading, bottom loading, rail tank car or tank truck. Loading arms can be supplied with a spring counterbalance assembly or counterweights.

REF. NO.	PART NUMBER	LIST PRICES
1	<b>Style 54</b>	P.O.A.
2	<b>Style 374</b>	P.O.A.

**Swivel Joints and Accessories**

Carbon steel and stainless steel swivel joints for LP-Gas, NH<sub>3</sub> and other liquid service available in sizes from 3/8" to 12". Threaded, Beveled, for Weld or Flanged end connections available. Designed flexibility with minimal maintenance concerns for rail/truck loading arms, bulkheads, hose reel connections, hydraulics and pneumatics plus other flexible piping applications.



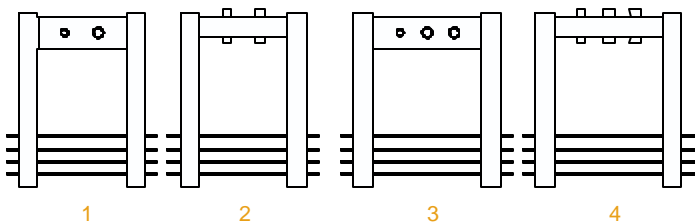
Choice of packing, seals and lubrication are available.

Part numbers are for use with LP-Gas only.

REF. NO.	SIZE	STYLE	PART NUMBER	LIST PRICES
1	2"	20	<b>3131945</b>	540.00
2	1-1/4"	30	<b>3131936</b>	382.50
			<b>3131946</b>	581.50
3	2"	40	<b>3131050</b>	1050.50
4	2"	50	<b>3131052</b>	1442.00
5	2"	534	<b>SJ534200</b>	1615.00

DESCRIPTION	SIZE	PART NUMBER	LIST PRICES
Seal Kits (Chiksan)	3/4" - 1"	<b>3108899</b>	40.04
	1-1/4" - 1-1/2"	<b>3108987</b>	41.44
	2"	<b>3109078</b>	61.32
Grease (Tube)	14oz.	<b>14OZ</b>	16.28

**Steel Bulkheads**



**RANSOME**  
MANUFACTURING

Steel Bulkheads are used for loading and unloading bobtails and transports. When correctly installed in concrete, they can withstand a 2000 lb. horizontal pull. Standard model is set up for vertical piping with a 2" liquid and 1-1/4" vapor connection.

Valve and fitting kits available.

DESCRIPTION	REF. NO.	PART NUMBER	LIST PRICES
Horizontal Bulkhead-2Hole (2" and 1-1/4")	1	<b>BHH2125</b>	642.00
Vertical Bulkhead-2Hole (2" and 1-1/4")	2	<b>BHV2125</b>	642.00
Horizontal Bulkhead-3Hole (2", 2" and 1-1/4")	3	<b>BHH22125</b>	850.00
Vertical Bulkhead-3Hole (2", 2" and 1-1/4")	4	<b>BHV22125</b>	850.00