

PUMPS

www.BLACKMER.com

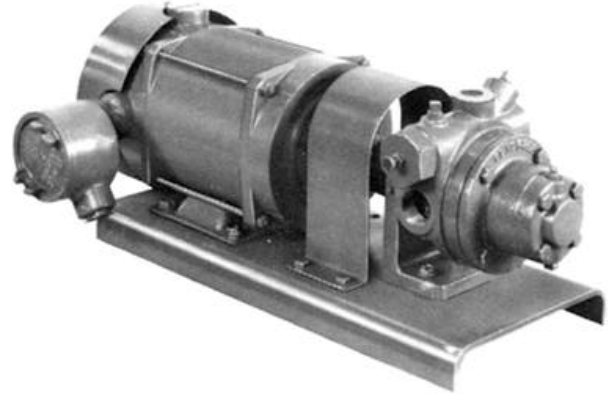
1" Pumps



Ideal for cylinder filling, motor fueling and for supplying small vaporizers. These pumps are fitted for both LP-Gas and anhydrous ammonia service.

DESCRIPTION	CAPACITY RANGE (GPM)	PUMP SPEED (RPM)	DELIVERY IN GPM		PART NUMBER	LIST PRICES
			50 PSI DIFF	100 PSI DIFF		
1" Flange Mounted	2 to 10	1750	8	6	LGF1	1502.00
1" Bracket Mounted					LGB1	1476.00
1" Flange Mounted	5 to 15	1750	13	10	LGF1P	1540.00
1" Bracket Mounted					LGB1P	1518.00

1" Pump Assemblies with Base Mounting



LGB series pumps have brackets for foot mounting to a conventional base plate. Motors ordered for these units are furnished to customer specifications. Standard motors listed here are single phase and explosion-proof.

DESCRIPTION	STD. MOTOR SIZE (HP)	PUMP SPEED (RPM) w/1750 RPM MOTOR	DELIVERY IN GPM		PART NUMBER	LIST PRICES
			50 PSI DIFF	100 PSI DIFF		
1" Bracket Mounted	1	1750	8	6	1LGB1D1	2360.00
	1.5		13	10	1LGB1PD1.5	3160.00

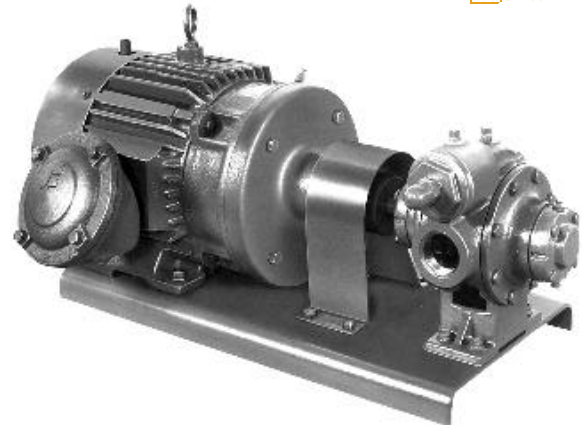
1" Pump Assemblies with C-Face Mounting



Pumps in the LGF Series mount directly to standard C-face, 1750 rpm motors with flexible coupling. They are UL listed and are suitable for continuous duty. An explosion-proof switch for remote mounting is provided.

DESCRIPTION	MOTOR SIZE (HP)	APPROX. MOTOR SPEED	DELIVERY IN GPM		PART NUMBER	LIST PRICES
			50 PSI DIFF	100 PSI DIFF		
1" Flange Mounted	1	1750	8	6	1LGF11	2200.00
			13	10	1LGF1P1	2220.00
	1.5		10	1LGF1P1.5	2340.00	

1-1/4" & 1-1/2" Pump Assemblies with Base Mounting



Foot-mounting is available for the LGL125 and LGL150 series pumps. The pump is mounted to a steel base plate and furnished with a flexible shaft coupling and connected to a standard motor. A coupling guard is included. Listed motors are three phase and explosion-proof.

1-1/4" & 1-1/2" Pumps



These motor-speed pumps offer higher capacities than the LGF1/B1 series pumps. They are suited to a variety of small transfer jobs, but are especially popular for multiple-station cylinder-filling systems.

DESCRIPTION	CAPACITY RANGE (GPM)	PUMP SPEED (RPM)	DELIVERY IN GPM		PART NUMBER	LIST PRICES
			50 PSI DIFF	100 PSI DIFF		
1-1/4" Foot Mounted	15 to 25	1750	21	18	LGL125	1790.00
1-1/2" Foot Mounted	25 to 35		33	29	LGL150	1976.00

DESCRIPTION	STD. MOTOR SIZE (HP)	PUMP SPEED (RPM) w/1750 RPM MOTOR	DELIVERY IN GPM		PART NUMBER	LIST PRICES
			50 PSI DIFF	100 PSI DIFF		
1-1/4" Foot Mounted	2	1750	21	18	3LGL125D2	2820.00
1-1/2" Foot Mounted	3		33	29	3LGL150D3	2960.00